

Tsâgu di #hâas ge Au !Hommi tsî llîb di !kharaga tsâsigu xa ra !gû,Igôan Inî llaega llîn tsâsiga llnâu!a lloa !khais llkhas khami. Nê #hâas ge Igôana ra hui in llîn tsâsiga mù!ã tsî #gailôn llkhâ. INami, #khâlnâs tsî !gâise hâ-us ge Igôana ra llkhâllkhâ matin llîn di tsâsiga ni llgau#ui !khaisa.

Created for Development Workshop Namibia
2024

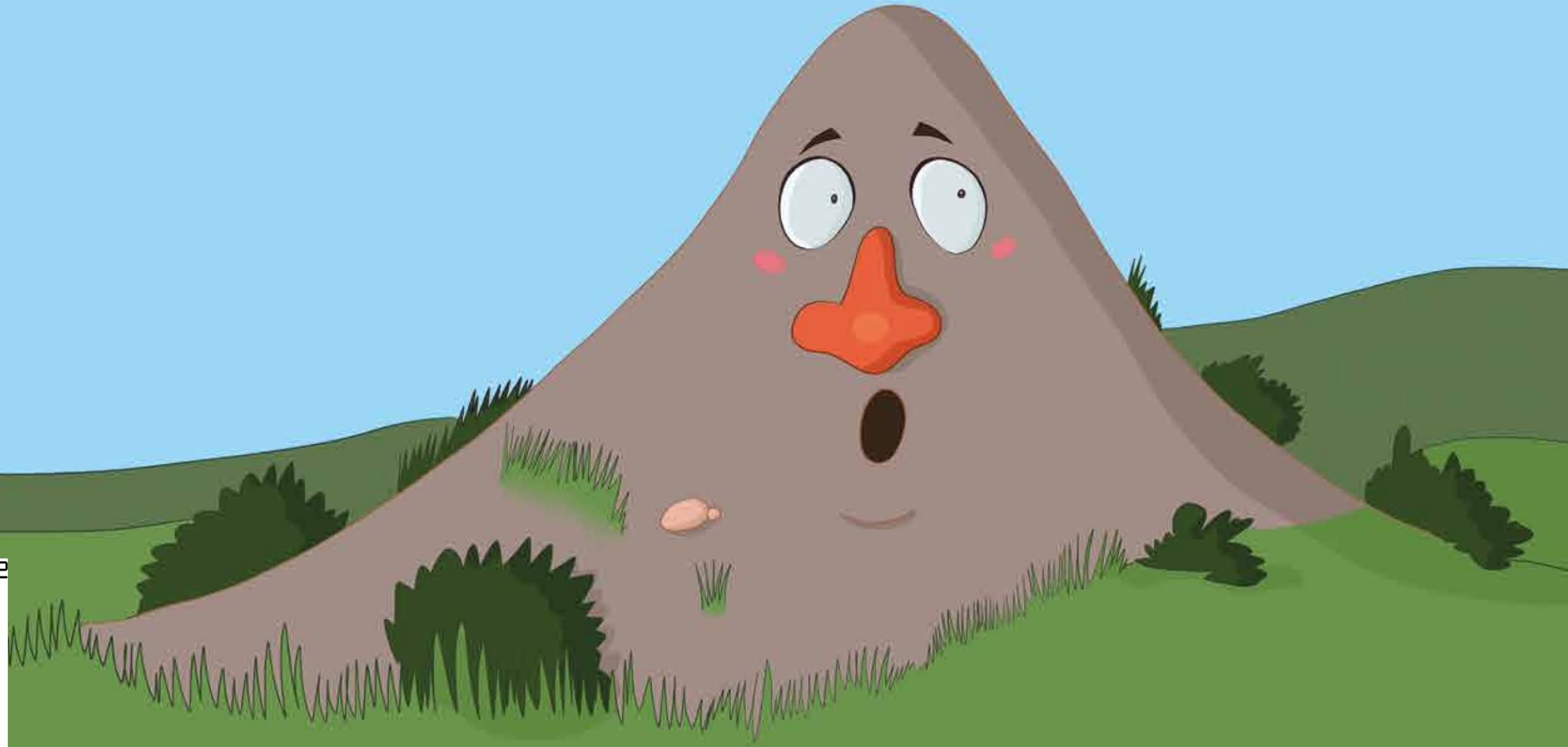
Developed with support of



ISBN 978-99945-903-2-2



9 789994 590322



Written by Hilma Weber
Illustrated by Elizabeth Kopf

Tsâsigu

Written by Hilma Weber
Illustrated and Laid out by Elizabeth Kopf

All rights reserved.

No part of this publication may be reproduced, stored in a retrieval system or transmitted in any form or by any means electronic, mechanical, photocopying, recording or otherwise, without prior written permission from the publisher.

First published in 2024 by Development Workshop Namibia
161 Mandume Ndemufayo Avenue, Windhoek
PO Box 40723, Ausspannplatz
Windhoek, Namibia

Website: www.dw-namibia.org

ISBN: 978-99945-903-2-2

Author: Hilma Weber
Illustrations: Elizabeth Kopf
Layout and design: Elizabeth Kopf

Printed in Windhoek, Namibia

Au !Hommi xa I ge Igopadi !nâ ge llânhe hâ i.





!Gâi Inâub hîa ra lāpib, hain tsî lgân hîa Au !Hommi
ai ra lhain, !aroman ge llîna ge lhōsagu i.

Hain tsî Igân ge Au !Homma,Igaisa sores tsî
ꜥoaba xu ge re llkhauba.



Au !Hommi ge !gâise ge re tsâ
llîb di kai !gupu sorob ðnamipe.

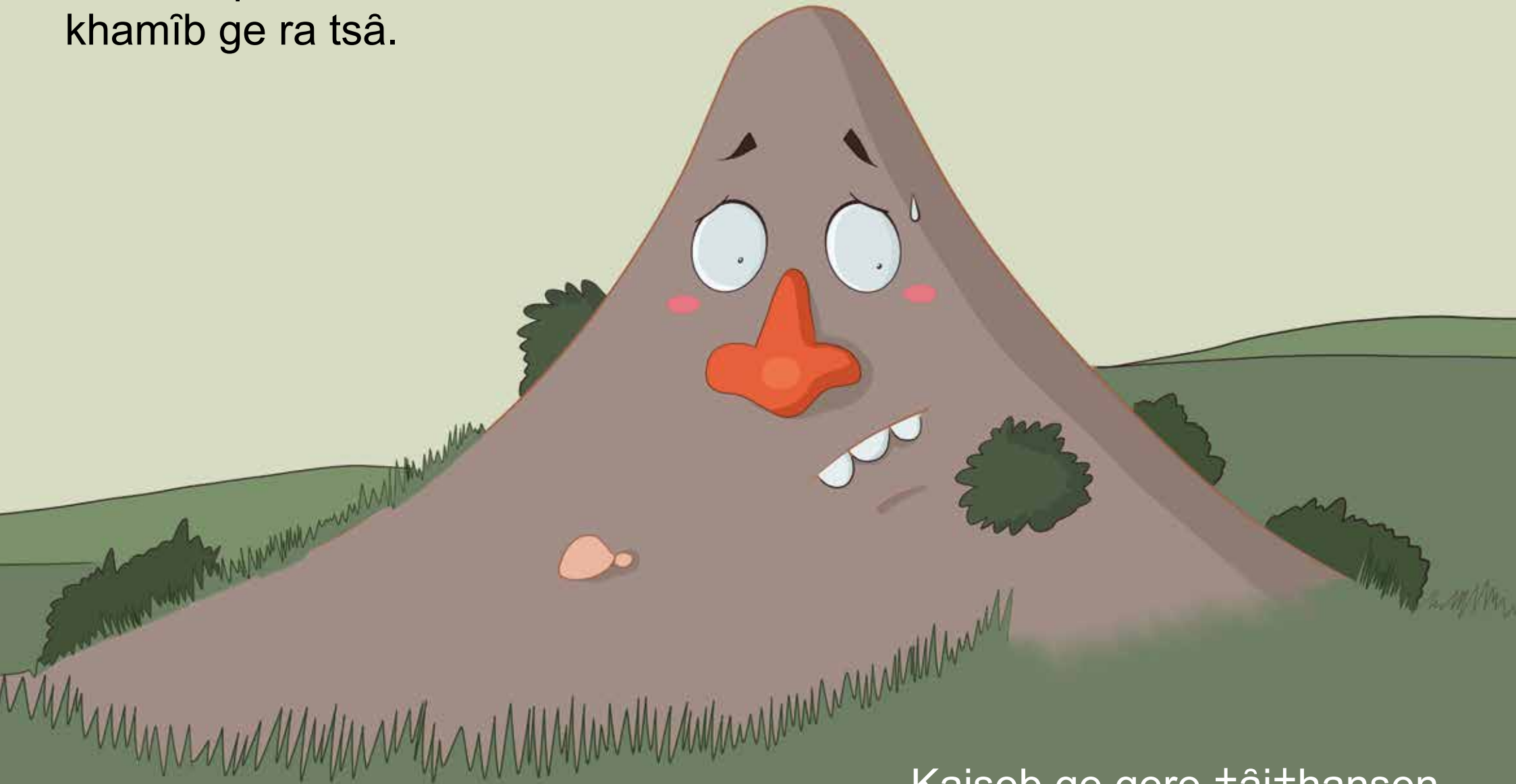
llîb ge ðkhî tsî Inamhe
hâ se ge re tsâ.



Sao ra kurikamaba, I ge Igaisa Inanu-e ge lāpi tama hā i.
Mati I ka ni ha ti lhōn, hain tsî Igân Ikha? Ti ra ≠hâb ge Au !homma.



llîb ge xun ra llkhânama khamî tsâ tsâsiba llîb
di kai !gupu sorob ðnamipe ra ho!â.
Kurutsilapidi ra llîb di kai sorob !nâ llkhânama
khamîb ge ra tsâ.



Kaiseb ge gere ðâiðhansen.

Ikhara kurikamab ge ge ha, nē !nasa īpetsi loro Inanub Ikha.
Nē !kais ge ra kai !gomsī kai. Mati I ka ni ha ti lhōn, hain tsī
lgân Ikha? Ti ra †âib ge Au !homma.



lîb di kai !gupu sorob !nab ge !gom se ra tsâ, lui I !gari I khamî.
Hoa tsaura !hūb lîb !na hâb ge !gari se ra tsâ,xu-I tsîn ge kon tama hâ.

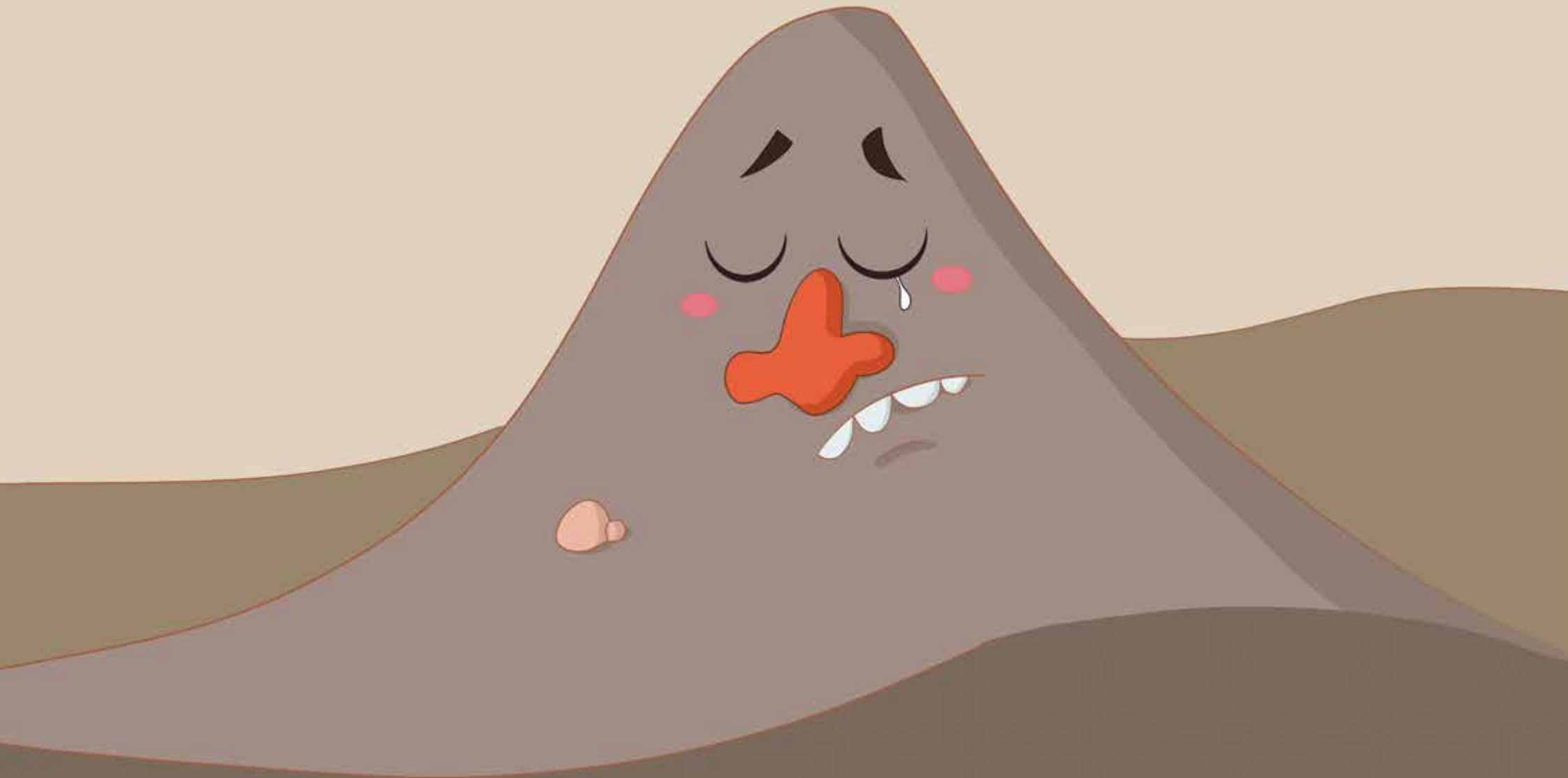


!Ao tsâsibab ge ra ho.

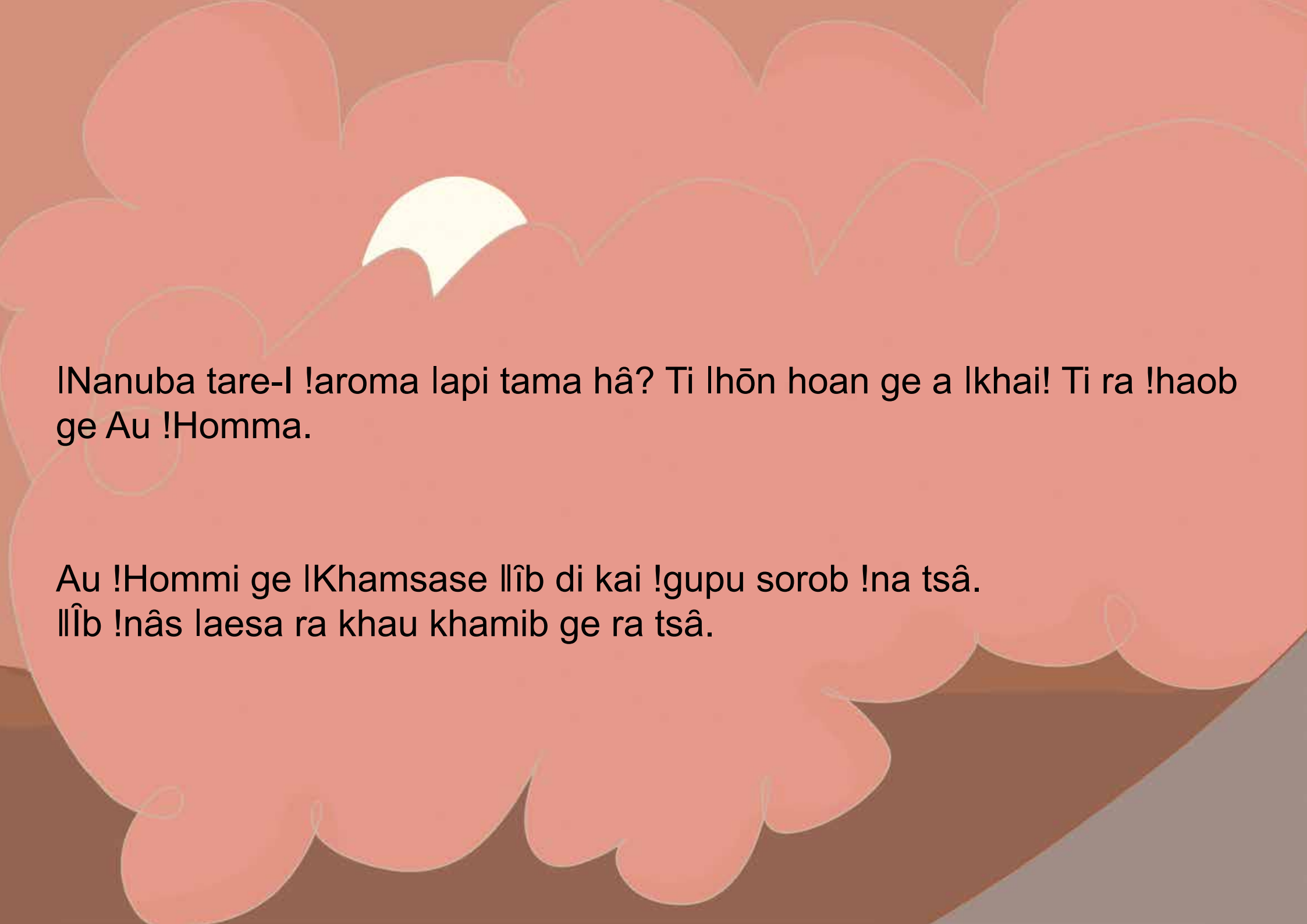
Au !Hommi ge ra !âubasen !gâi Inanub noxoba nî llnā !khaisa.

Xawe nē !nasa I ge lapis tsîna hî tama hâ.
Hain tsî lgân ge hoargase go ðnâ.

ll̂b ꜱnamipe l ge xu-l tsîna a lkhai.




lGaisa sores tsî ꜱoaba nî
llkhaubabi xu-l ge lkhai.



!Nanuba tare-! !aroma lapi tama hâ? Ti lhōn hoan ge a !khai! Ti ra !haob
ge Au !Homma.

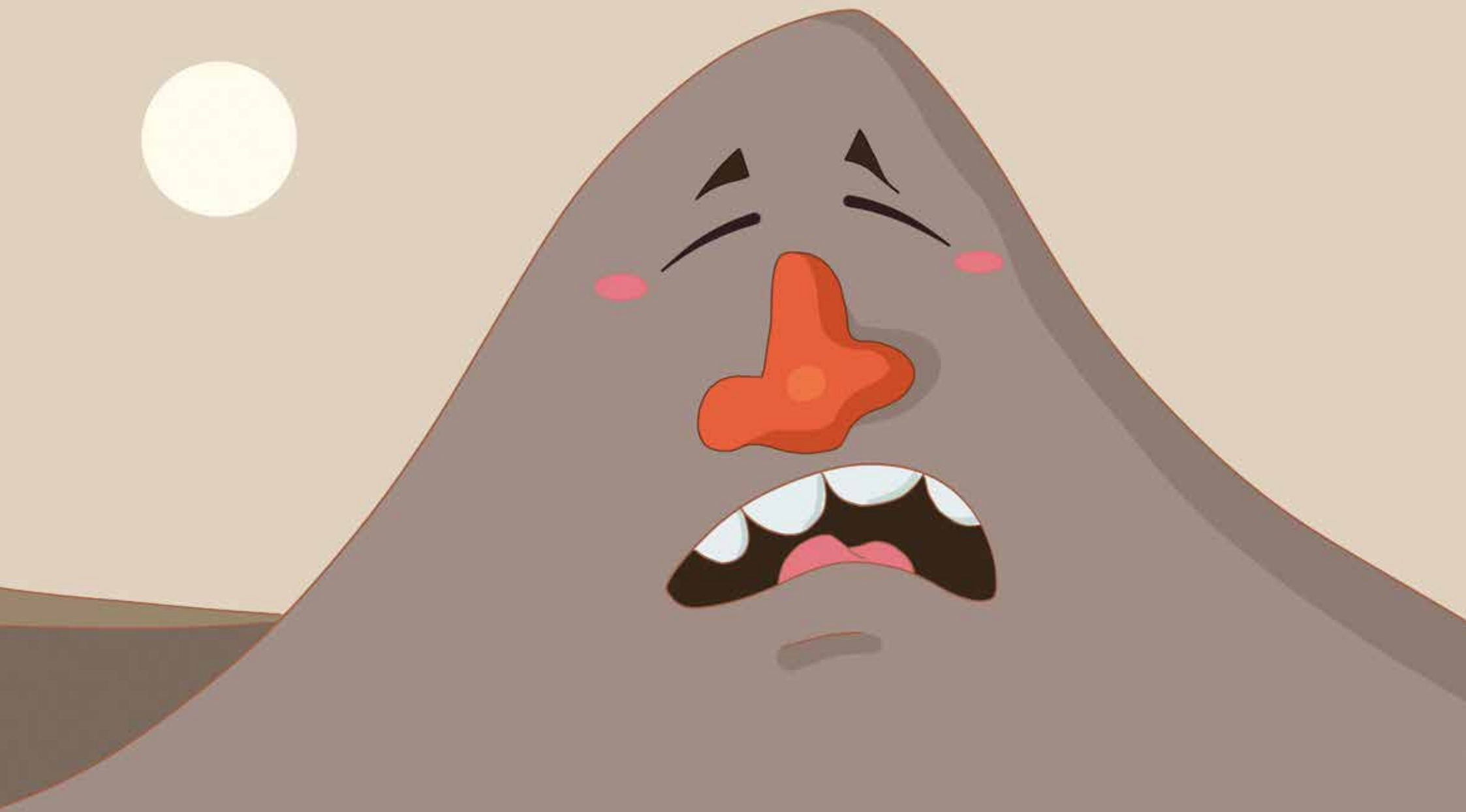
Au !Hommi ge !Khamsase llîb di kai !gupu sorob !na tsâ.
llîb !nâs laesa ra khau khamib ge ra tsâ.



llîb ge go !hui...Buuuuuuufff..
Kai nanigu laes digu tsî lân nî
ge llîb di kai !gupu soroba xu
go ðoaxa.

llîb ge llaixa hâ.

Au !Hommi ge !oa hâ. llîb ge ra ā.
llîb ge lguri tsî hui-ose ra tsâ.



ll̩b ge tsāba ll̩haobi n̩i khoe-e ʰhā hā.

Goab ts̩i goas ts̩ira !aub di ra ge a kō!gāxa ts̩i a !gao!gāxa.



Ilîra ge ge mû, Au !Hommi khoe-e ðhâ hâ !khaisa.



Tā ðâiðhânsen re Au !Homtse, hoa xun ge nî !gâi xuige.
IGurits ge hâ tama hâ. Sim tsîn ge sa lkha hâ. Sim ge nî lkhaubatsi.
INanub ka lkhawa lapi on ge sa lhōsan hoan nî oalkhi. Tib ge gaob
tsî gaosa ra mî.

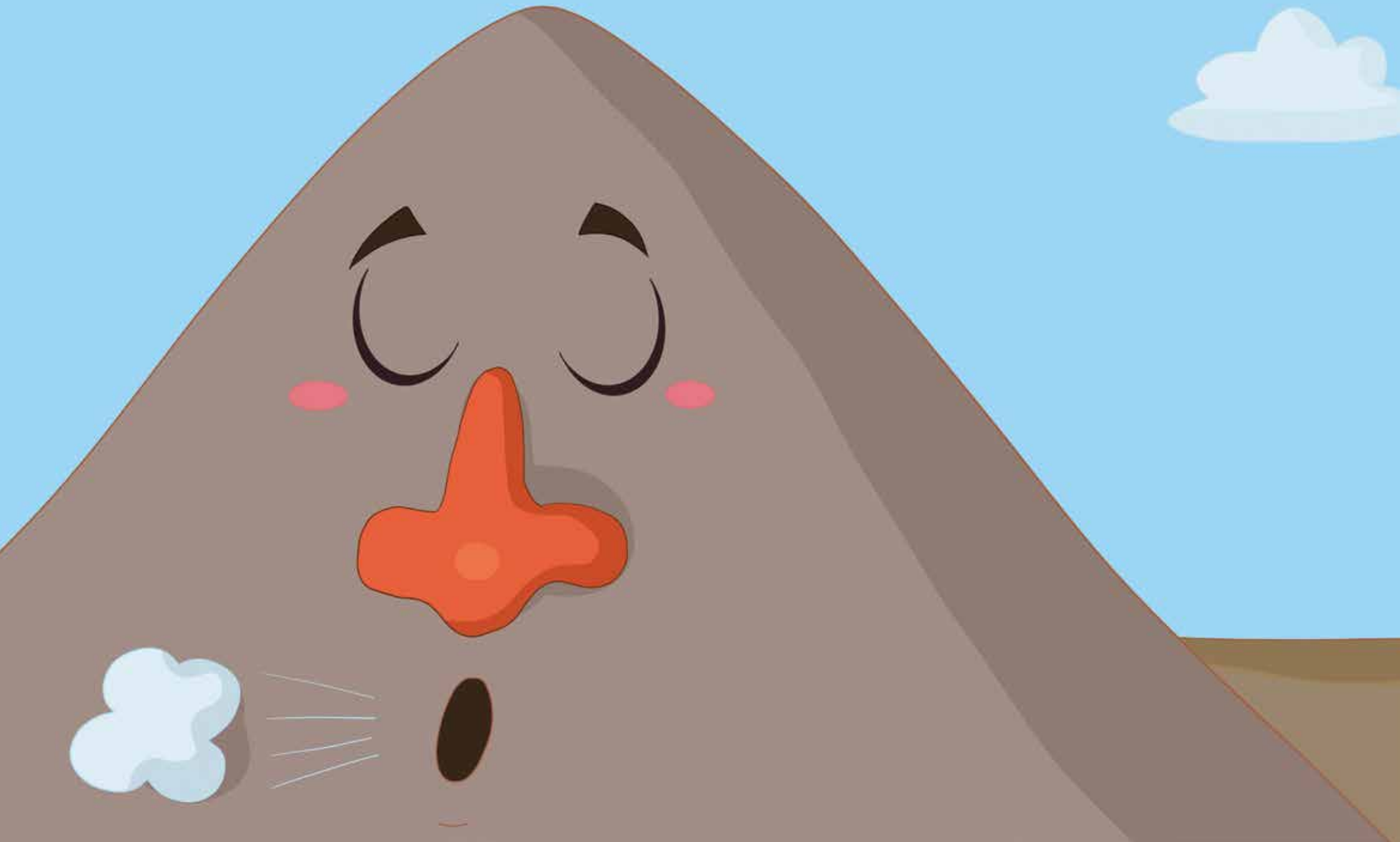


Kō!gâs tsî !gâi≠gaoxasib gaob tsî gaos tsîra dib
lkhab ge Au !Homma harase go lom≠ga.



≠Oab ge llîb di kai !gupu soroba go loa.
!Gui gaxu !nâib lkhab ge go lom≠ui, llîb
di kai !gupu soroba xu.

Supu tsî sâsâseb ge ra tsâ.
llîb ge llkhawa a ðkhî.



1Ams.

Xoa-aos xa

Hilma Webers ge lapas lkarib !nâ #khari !garo!aros ai !nae tsî ge kai. !Îs di sîsen tsoatsoas kurigu !nâs ge !narisarimas sektos !nâ gere sîsen, !napas ge dana #gae#gui-ao I se. !Îs di !nami !oega !gôan !khâ!khâsens dib ge, !Îs di #khamsis !nâ aitsama khomai #khanina ûhâ tama is xa ge hirihiri!nâhe tsî nēs xa !aromahe hâses ge !Îs di sîsen tsoatsoas di #garob !nâ ge ho#ui, !nami tsî !khusib #khanina khomais tiba.

!Gutikosis ge Namibiab !hûhasib !nâ a !khai tsî !na-amagas ge !Îsa hoalae !Îs di !âba di tsî xu-o khoen di ûiga omkhâis di !khoreba ge ûhâ I, !go-aisase !gôana.

2019 (!gamdisi tsî disikhoeselâ) !Î kurib !nâs ge Hilmasa !Oega !GÔasi Omkhâisen (ECD) dis saogub, DWNs di “!Hurus hoan !aroma” di a #ansaba ge tsoatsoa . !Îs ge khoena xus !haolhao hâ !gôaron #khanina, !gôaron !hânagu tsî !kharaga !ân!guigu !nâ !gora#ui tsî !gôana ra #khanina khomaiba se !aeba gere !kharu kai. Nē !hûhaodi tsî !Îs di #khamsis #ôas ge !Îsa ge #gao#gao!nâ is !gôan di khomai #khanina xoa tsoatsoa. !Oadisis di khomai #khanin ge a !gora#uisa mari-o !nâse Namibia #hawase !goe !gôan tawa.



!sîlnō!nâs !khōdana aos xa

Elizabeth Kopfs ge Namibiab huri-ami ai ge kai tsî nēpas ge !Îsa ge !khâ!khâse matis nî !Îs di #khari !hûbairoba kurusa !sina !nō!nâs !nâ-u. !Îs ge animationa, ai-!sî !khō!nâs/film tsî ai-!sî #hōa#gares !aroma ge !khâ!khâsen xawes ge !unis ai ge graphic design-I, !sîlnō!nâs tsî xukurusa di !gau!nâ-ao kai.

!Îs di !nami ai-!sîsin #hōa!gams/ !garupen dib tsî !khasib nē !khasiba sîsen-us tsî #âi!gaub !gôan diba ûiûis dib !khas ge Namibiab tsî !auka!hûgu !nâ #gui !gôan #khanide !sîlnō!nâ !nâ hâ.